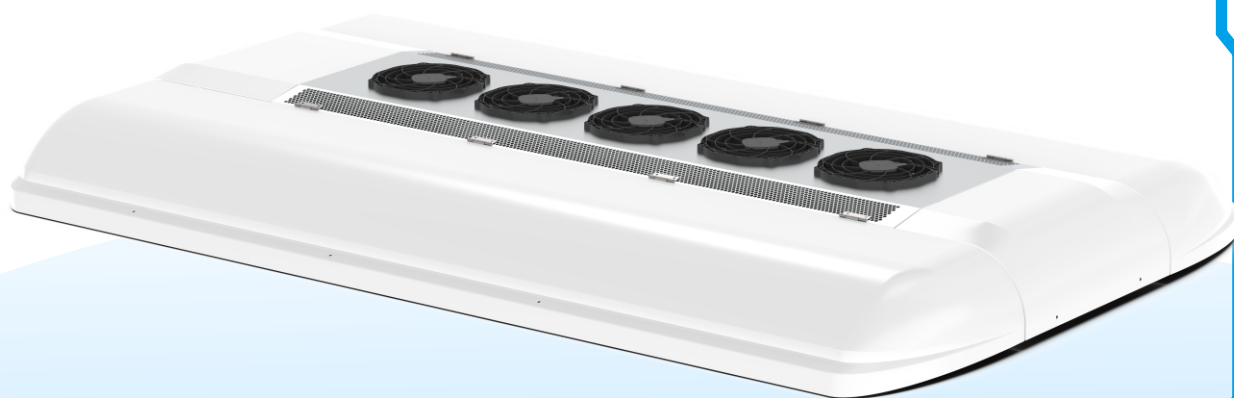


# EZDS-06

## Heat Pump Electric Bus AC



Energy Saving



Safety



Light Weight



Comfortable



Recyclable



Intelligent

[www.clingac.com](http://www.clingac.com)

# EZDS-06



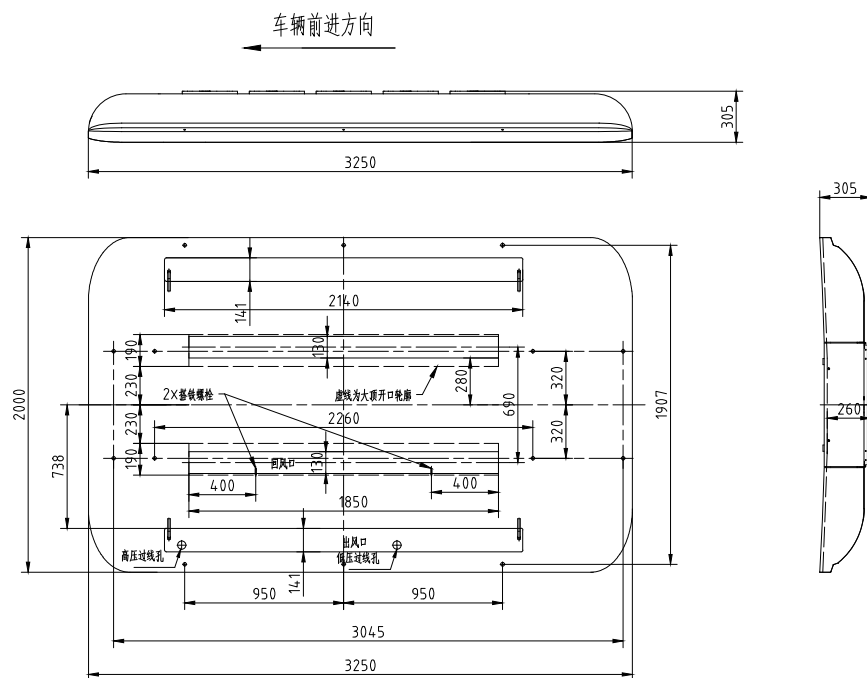
## Technical Data

Cooling Capacity(kcal/h)	32000
Heating Capacity(kcal/h)	30000
HV Platform (V)	400-750
LV Platform (V)	24
Evaporator Airflow(m <sup>3</sup> /h)	6000(6Pcs)
Condenser Airflow(m <sup>3</sup> /h)	10000(5Pcs)
Refrigerant	R407C
Weight(kg)	305
Size (mm) L*W*H	3000*1920*285
Application(M)	10-12

- The parts have a protection grade of IP67, waterproof, dust-proof and free of damage due to soaking in water.
- V-shaped vibration damping and noise reduction result in low noise and comfortable environment.
- PWM stepless speed regulation coupled electronic expansion valve is precisely regulated, to cause natural temperature transition, energy saving and comfort.



## Drawing



Van



City Bus



Intercity Bus



Coach



School Bus