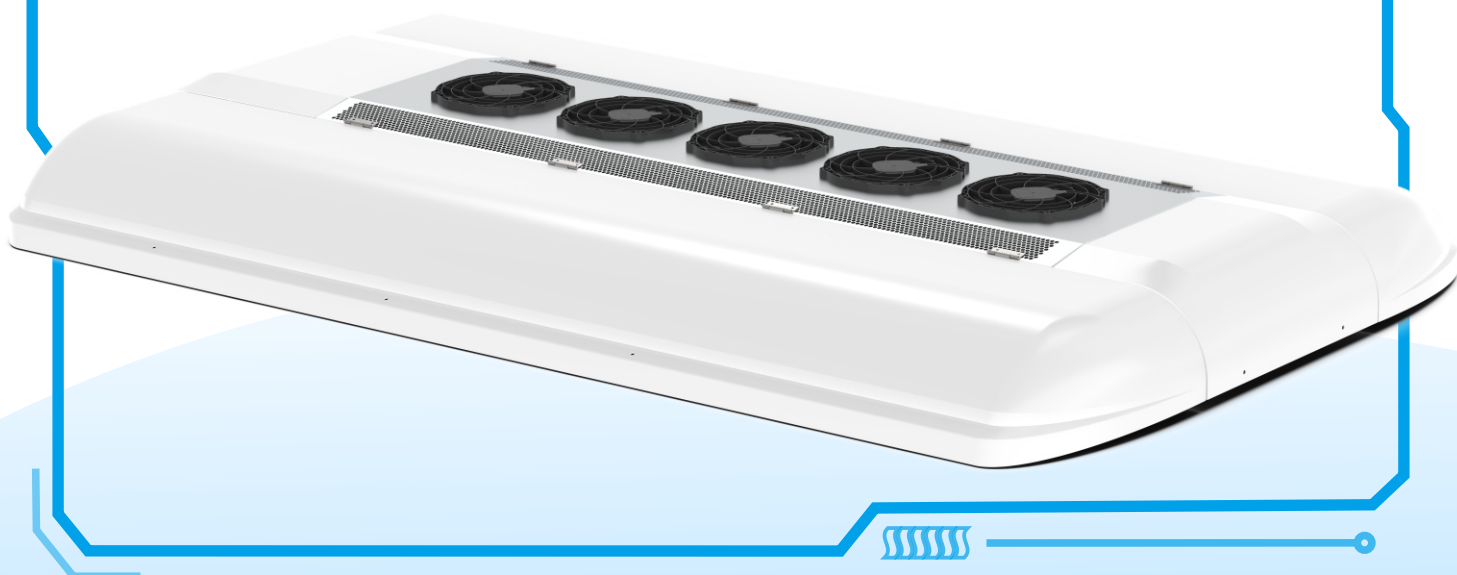


# LEZDS-06-J

**Low Temperature Heat Pump Electric Air Conditioner**



Energy Saving



Safety



Light Weight



Comfortable



Recyclable



Intelligent

[www.clingac.com](http://www.clingac.com)

# LEZDS-06-J



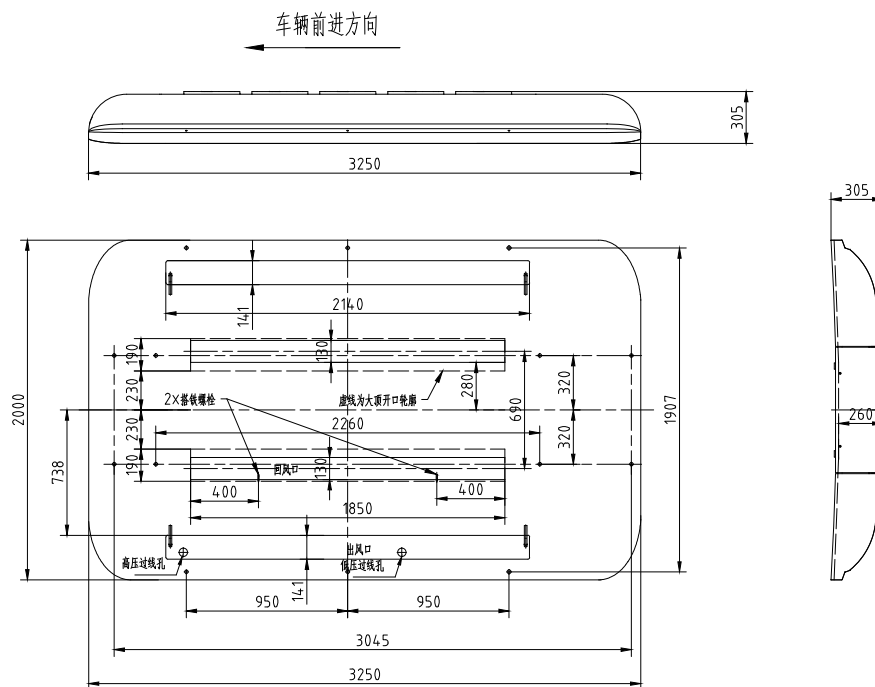
## Technical Data

Cooling Capacity(kcal/h)	32000
Heating Capacity(kcal/h)	30000
Battery Cooling Capacity Driving/Charging (kW)	5/8
Evaporator Airflow(m <sup>3</sup> /h)	6000(6Pcs)
Condenser Airflow(m <sup>3</sup> /h)	10000(5Pcs)
Refrigerant	R410A
Weight(kg)	315
Size(mm) L*W*H	3250*2000*260
Application(M)	10-12

- It is capable of normal and stable operation at ambient temperature of -15°C~50°C.
- The low temperature heat pump increases the heating capacity of the system under operating condition at low temperature and reduces power consumption by more than 50% compared with PTC.
- Pressure sensor coupled electronic expansion valve realizes the precise control of system refrigerant, natural temperature transition, energy saving and comfort.
- Remote and real-time monitoring of product operating status reduces the management cost.



## Drawing



Van



City Bus



Intercity Bus



Coach



School Bus